



THE LAW REGARDING THE COLLECTING OF ROCKS IN MICHIGAN

WHERE CAN I COLLECT?

- ✓ USDA-administered National Forests and Recreation Areas
- ✓ Private property with the express permission of the landowner
- ✓ State-owned lands and lands held in the public trust



State-owned lands mostly refer to state parks.

Lands held in the public trust include the soil/sand/rocks beneath the waters of the Great Lakes and Michigan rivers up to the "Ordinary High Water Mark" as defined by the Army Corp of Engineers.

The "Ordinary High Water Mark" (OHWM) is usually within a few vertical feet, sometimes just inches, from the current water level. It virtually never extends to the top of a beach, which may be private property or managed by another agency.

Lake elevations and OHWMs can be found on the US Army Corp of Engineers website.

WHERE CAN'T I COLLECT?

- ✓ From within the boundaries of any National Park or National Lakeshore
- ✓ From private land without the express permission of the landowner

COLLECTING ARTIFACTS, METEORITES, OR ANTIQUITIES OF ANY KIND FROM FEDERAL, STATE-OWNED, OR PUBLIC TRUST LAND **IS ILLEGAL!**



COLLECTING STONES AND MINERALS MAY REQUIRE A FREE USE PERMIT:

Check with a local ranger station. Rules and enforcement appear to vary.

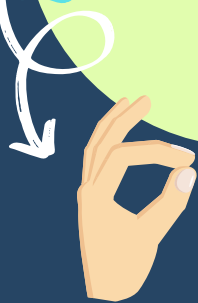


ANNUAL LIMITS

The annual limit for collecting USDA-administered National Forest and National Recreation lands is:

"A SMALL REASONABLE AMOUNT FOR PERSONAL USE."

* Some signs indicate that this means about 10lbs.



COLLECTING INVERTEBRATE FOSSILS **IS ALLOWED** ON USDA LANDS

The annual limit for collecting rocks on state-owned and public trust lands is 25lbs per year in Michigan:



* 25lbs PER PERSON, per year

* 25lbs TOTAL, not of each rock variety

* 25lbs includes invertebrate fossils

* 25lbs TOTAL, not from each location



There are **NO LIMITS** on collecting from Private Property as long as you have **PERMISSION** from the landowner.

NOTE:

These are general laws and regulations that may be superseded by additional rules and ordinances. Always look for signage. Rules may differ at specific parks and locations. Always obey all posted rules and regulations!

DISCLAIMER:

YOU ARE RESPONSIBLE for staying up-to-date on current laws where you are rockhounding. Although we make strong efforts to make sure our information is accurate, Michigan Rockhounds cannot guarantee that all the information is correct, complete, or up-to-date.

To the maximum extent permitted by law, in no event shall Michigan Rockhounds be liable for consequential, incidental, special, financial, indirect, or exemplary damages whatsoever arising out of or in any way relating to this document or use of or inability to use the information provided. It is the users' understanding that Michigan Rockhounds is not rendering legal advice, and each user should do their own legal research.

